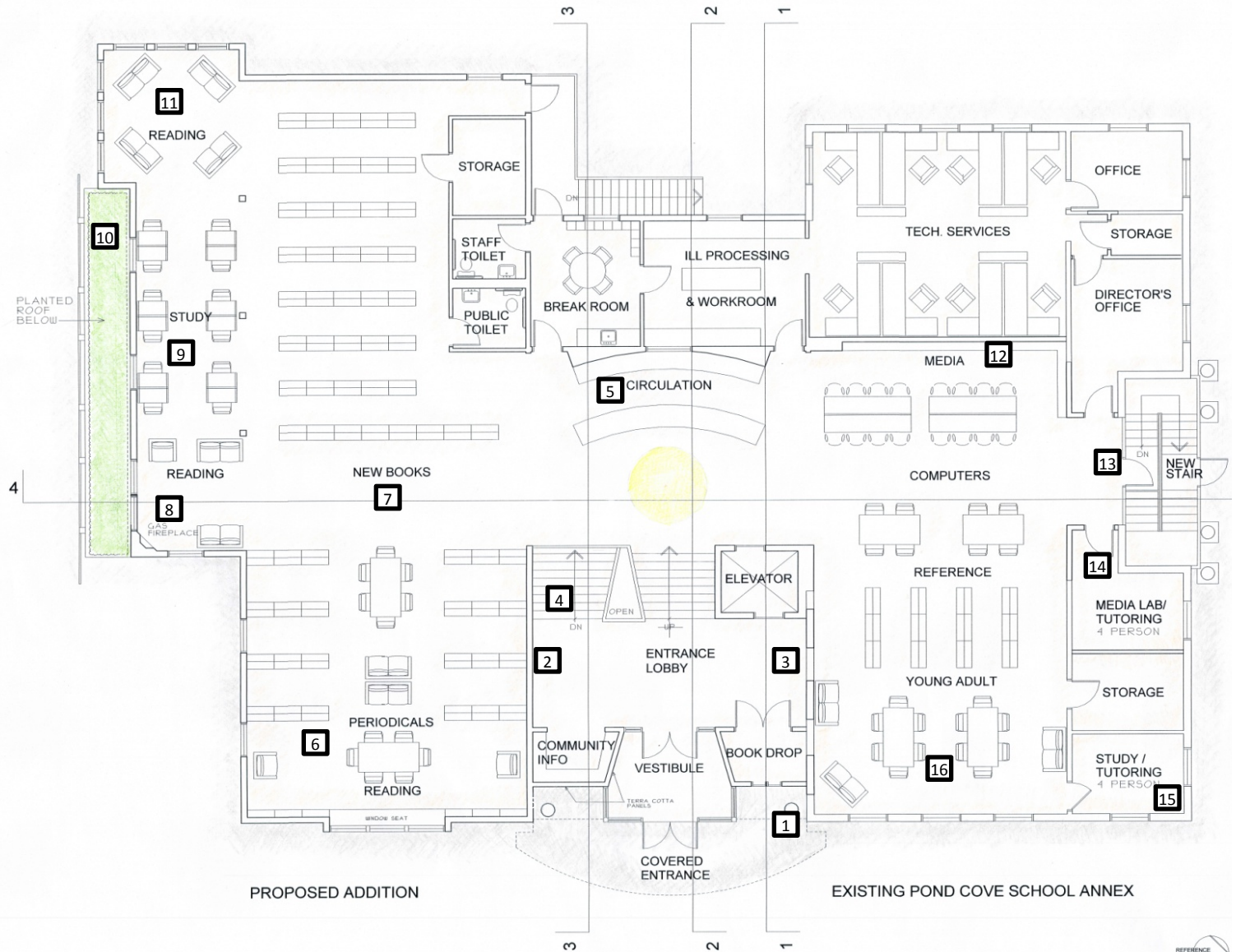
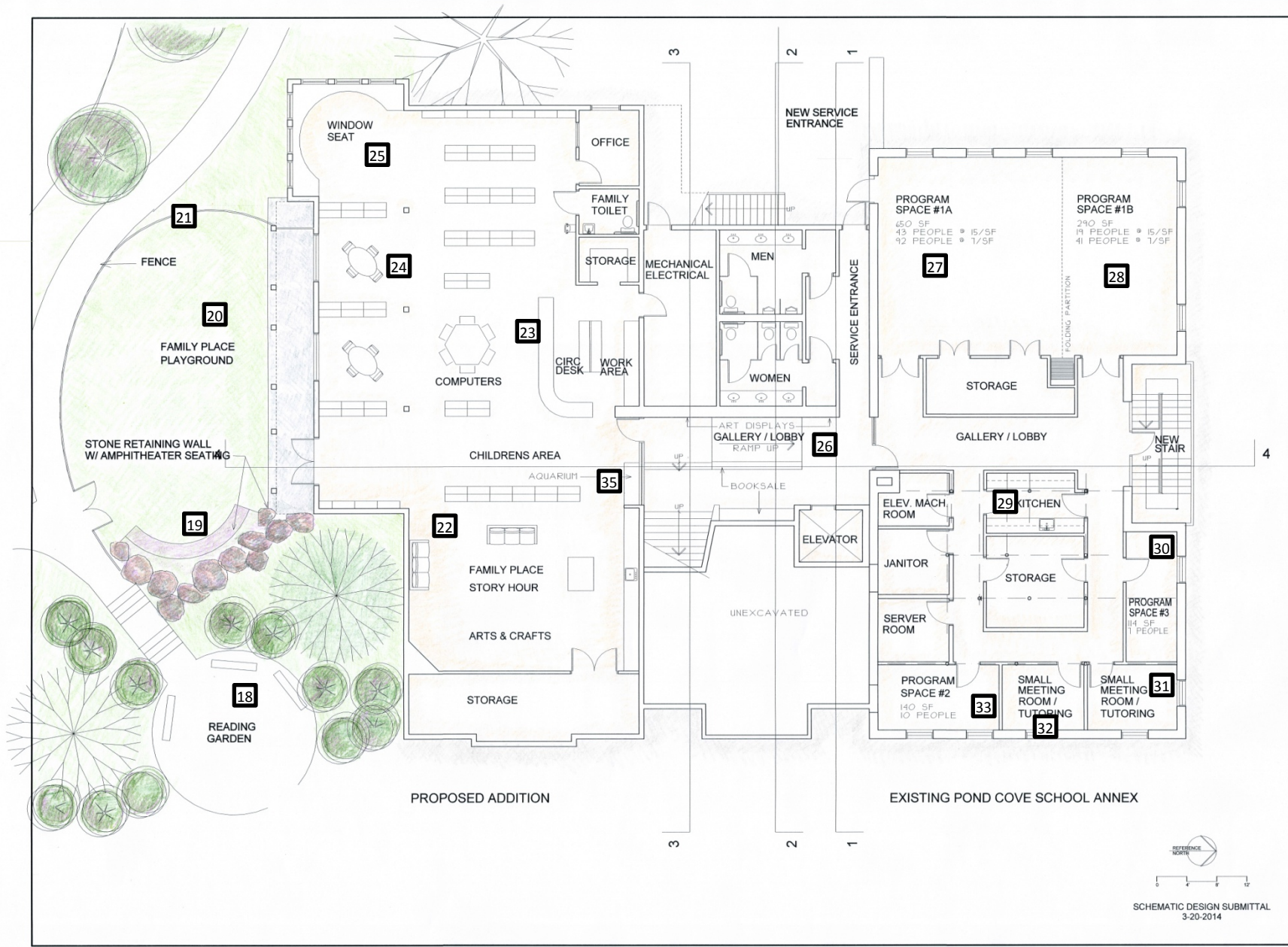


DRAFT





ARCHITECT:
REED & CO ARCHITECTURE
 46 CAMBERLAND AVE
 PORTLAND, ME 04101
 207 871 3578

CIVIL & ENVIRONMENTAL ENGINEERS:
 CASPER ENGINEERS
 424 FOREST ST
 PORTLAND, ME 04101
 207 862 2222

LANDSCAPE ARCHITECT:
LAND DESIGN SOLUTION
 P.O. BOX 100
 180 LONGVIEW RD
 CAMDEN, ME 04843
 207 838 7177

MECHANICAL ENGINEERS:
HOLBROOK ENGINEERING
 52 HEATH RD
 SACO, ME 04072
 207 283 9127

ELECTRICAL ENGINEER:
BARTON ENGINEERS
 100 W. GARDEN ST
 BATH, ME 04502
 207 443 3333

INTERIOR DESIGNER:
COLE DESIGN
 30 CRAVENS RD
 KITTINGTON, ME 04044
 207 653 3333

CONSTRUCTION MANAGER:
ZACHAU CONSTRUCTION INC.
 1785 US ROUTE ONE
 PRESQUE, ME 04962
 207 865 9625

EXPANSION OF
THOMAS MEMORIAL LIBRARY

6 SCOTT DYER RD
 CAPE ELIZABETH
 MAINE, 04107

196 LOWER LEVEL
 FLOOR PLAN

Scale:
 Date: 3/22/14
 Revised:

A.0

REFERENCE NORTH
 0 4 8 12
 SCHEMATIC DESIGN SUBMITTAL
 3-20-2014